



FAITH FORMATION FOR GR 5-7

Dear parishioners,

The intermediate phase in school is the time between the Sacraments of First Holy Communion and making the decision to receive the Sacrament of Confirmation. It is also the time when many youngsters start to fall away from the Faith and leave the Church. The EDGE programme is designed to be a fun-filled way for Grades 5 to 7 to form long-lasting friendships while learning more about the Faith; they can learn and discuss questions on the Faith, while their growing relationship with our Lord can help them deal with emotions and struggles in this adolescence phase.

In the current circumstances of not being able to meet face to face, EDGE will be offered online during the Lenten period. It will prepare their hearts for Easter over the 7 weeks of Lent by giving them a deeper understanding of the Resurrection of our Lord. Much of it does involve the whole family.

We hope you will sign up with EDGE and make use of this wonderful resource.

Yours in Christ,

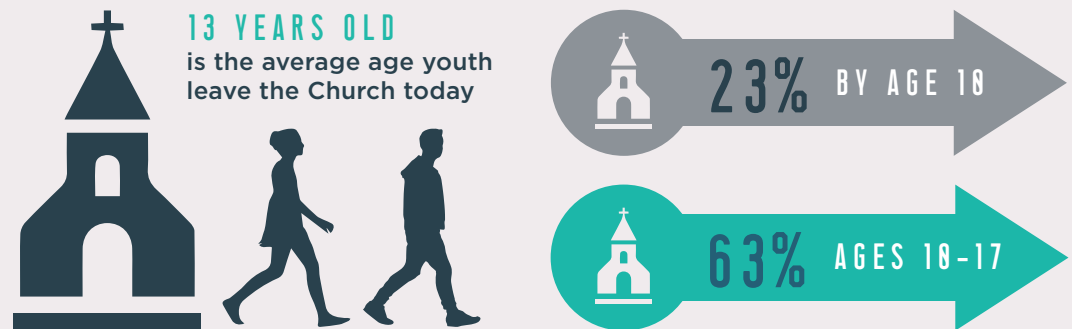
The EDGE Facilitators

The first session begins on Friday 12 February. Please sign up by Wednesday the 10th so that we can include your child in the preparation of resources. The Lenten series consists of printed handouts, online resources and weekly check-ins via Zoom. The flexible course is structured to accommodate home participation as much as possible. Online participation is preferred but not strictly necessary.

EDGE MIDDLE SCHOOL YOUTH MINISTRY

OUR PLAN TO KEEP OUR YOUTH ACTIVELY CATHOLIC

>> CHALLENGE: "YOUNG PEOPLE ARE LEAVING THE CHURCH..."



**These statistics are taken from a recent CARA (Center for Applied Research in the Apostolate study)*

>> SOLUTION: EDGE MIDDLE SCHOOL MINISTRY

Edge is a Catholic middle school youth ministry program. It provides a safe and fun place for youth to find solid Catholic community, to get answers to their questions about faith, and, most importantly, to experience Jesus in a profound and personal way.

WHY IS EDGE EFFECTIVE?

Now more than ever middle school youth need the truth and love of Jesus Christ to guide their lives and they need the faith presented in a way that makes sense to them and is relevant to their lives. **Edge** accomplishes this and builds a foundation of faith that will guide the youth as they face many difficulties and help them as they begin to make decisions that affect the rest of their teen years.

As middle school youth wade through all the difficulties of this time of life, they have real questions and need real answers. If parish leaders ignore the unique challenges of their middle school youth, they risk losing them forever.

FOR MORE INFO:



LIFETEEN.COM/EDGE-MINISTRY